



**CBV**  
R·E·S·O·R·T H·O·M·E·S

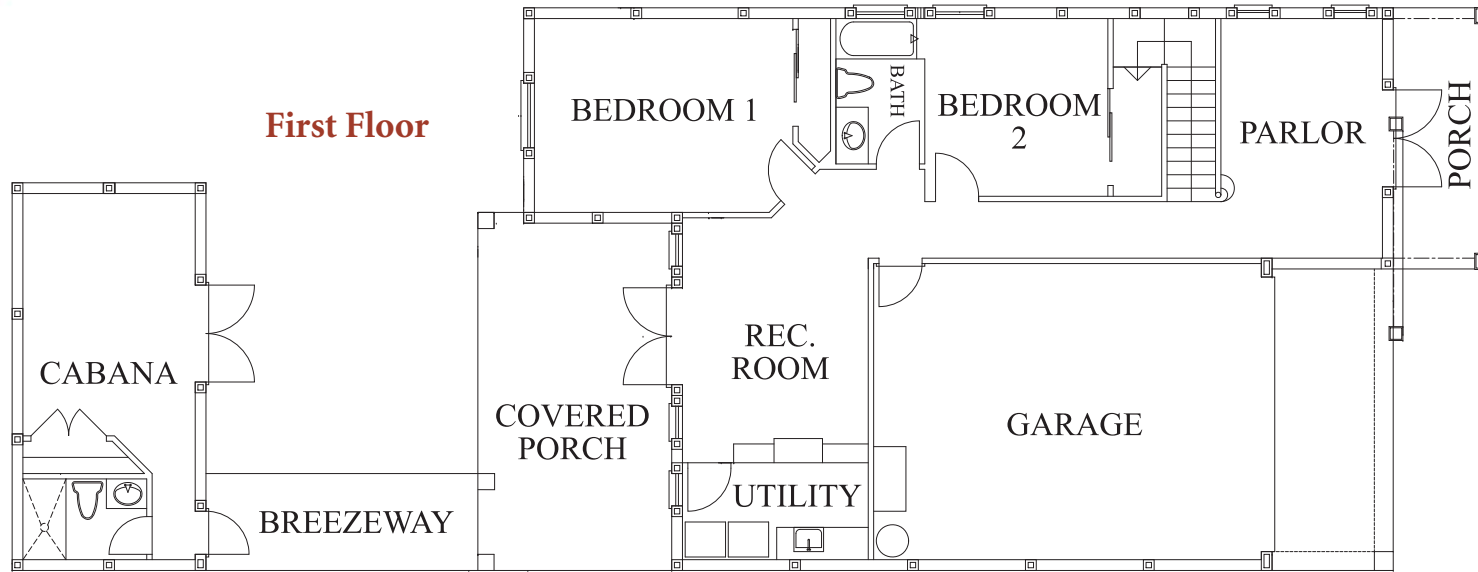


ARTIST'S RENDERING. ACTUAL CONSTRUCTION MAY VARY.

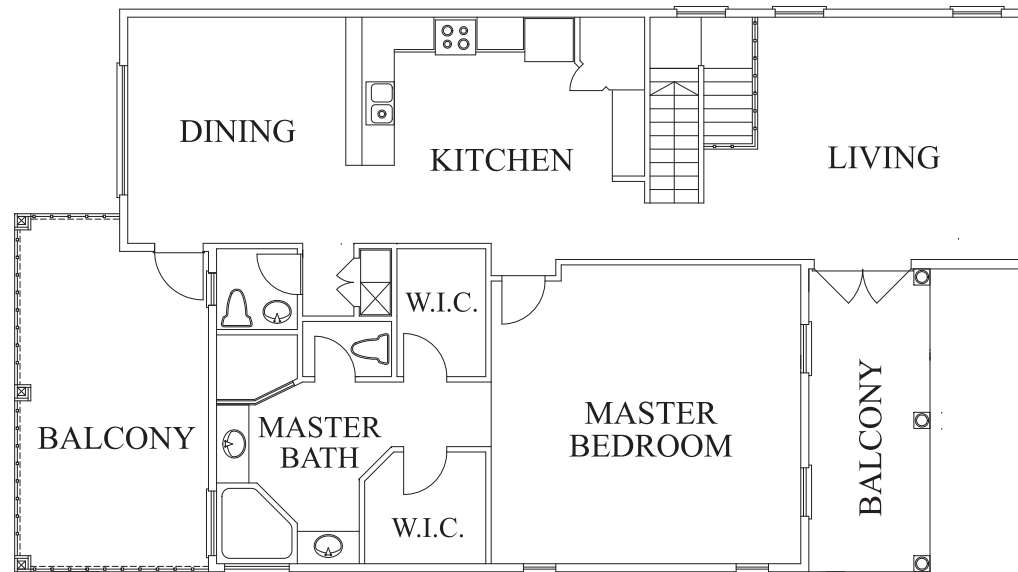
**BRODIE POINTE**

[WWW.CBVHOMES.COM](http://WWW.CBVHOMES.COM) | 877.CBV.6300

**First Floor**



**Second Floor**



**BRODIE POINTE**

**First Floor**

Bedroom 1	12x16
Bedroom 2	11x11
Rec. Room	15x12
Cabana	17x12
Parlor	10x14
Covered Porch	20x12
Utility	12x6
Breezeway	16x6
Garage	24x19
Entry Porch	16x6

**Second Floor**

Living	16x15
Kitchen	18x15
Dining	14x14
Master	19x19
Master Bath	16x12
Rear Balcony	20x12
Front Balcony	19x7

**Under Air Square Footage**

First Level:	1328
Second Level:	1510
Total SF Under A/C:	2838

Garage: 456 Square Feet

**BRODIE  
POINTE**

Presented by



www.cbvhomes.com  
877.CBV.6300

Actual square footage may vary depending on official plans