

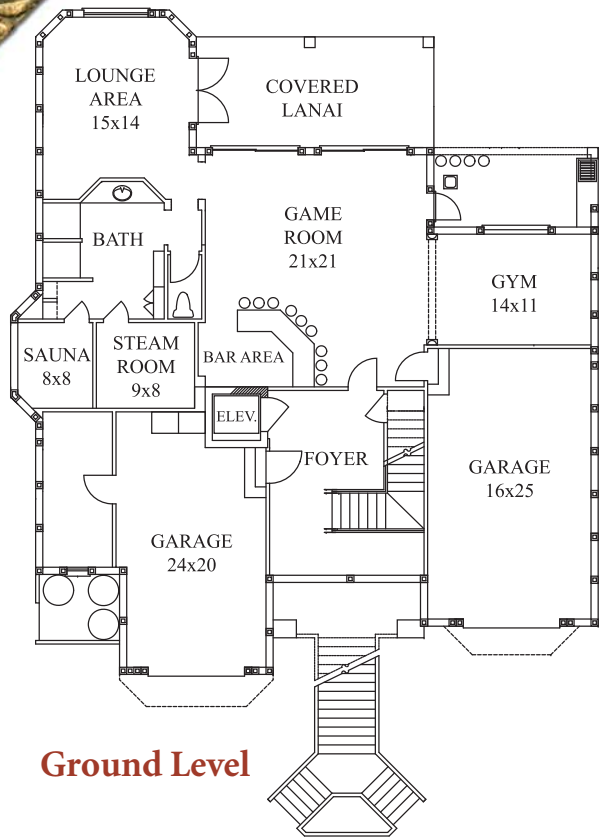


**CBV**  
R·E·S·O·R·T H·O·M·E·S

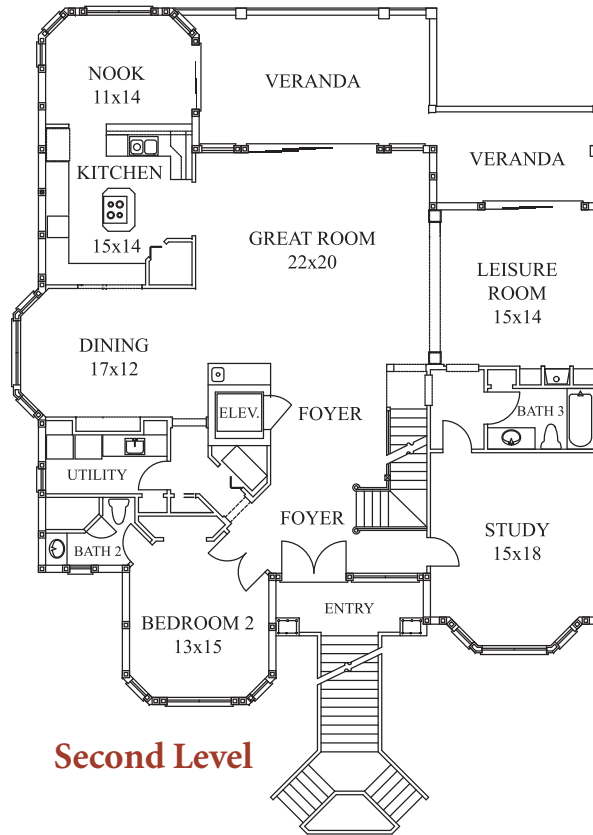


**CAITLIN'S COVE**

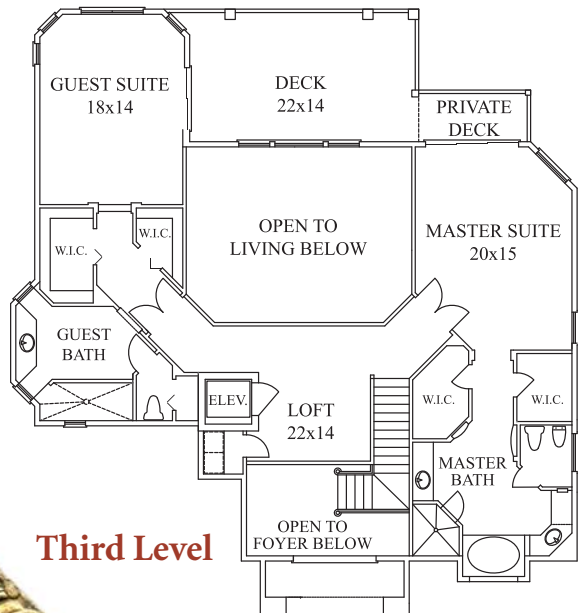
[WWW.CBVHOMES.COM](http://WWW.CBVHOMES.COM) | 877.CBV.6300



**Ground Level**



**Second Level**



**Third Level**



After ascending the majestic dual entry staircase leading to the *The Caitlin's Cove*, the homeowner is immediately greeted by a stunning view through the foyer and two story great room towards the rear of the property. The gourmet kitchen and breakfast nook also flow into the great room and expansive veranda on the rear of the home. The upper level of the home features two private master suites with lavish baths and large outdoor balconies, and an oversized loft overlooking the great room. The ground level showcases a spa inspired Homeowners Retreat with a fully equipped steam room, sauna, lounge, multiple showers and locker area, full bar and gym. Amid all of these features are vaulted ceilings and designer finishes along with an abundance of space for indoor or outdoor luxury entertaining.

CAITLIN'S COVE	
<b>Ground Level</b>	
Lounge Area	15x14
Steam Room	9x8
Sauna	8x8
Game Room	21x21
Gym	14x11
Garage (L)	16x25
Garage (R)	24x20
<b>Second Level</b>	
Nook	11x14
Kitchen	15x14
Great Room	22x20
Leisure Room	15x14
Dining Room	17x12
Study	15x18
Bedroom 2	13x15
<b>Third Level</b>	
Guest Suite	18x14
Master Suite	20x15
Loft	22x14
Deck	22x14
<b>Under Air Square Footage</b>	
Ground Floor:	1534
First Floor:	2506
Second Floor:	1575
Total SF Under A/C:	5615
<b>Garages: 803 Square Feet</b>	

Presented by  
  
**CBV**  
**R·E·S·O·R·T H·O·M·E·S**  
 www.cbvhomes.com  
 877.CBV.6300